

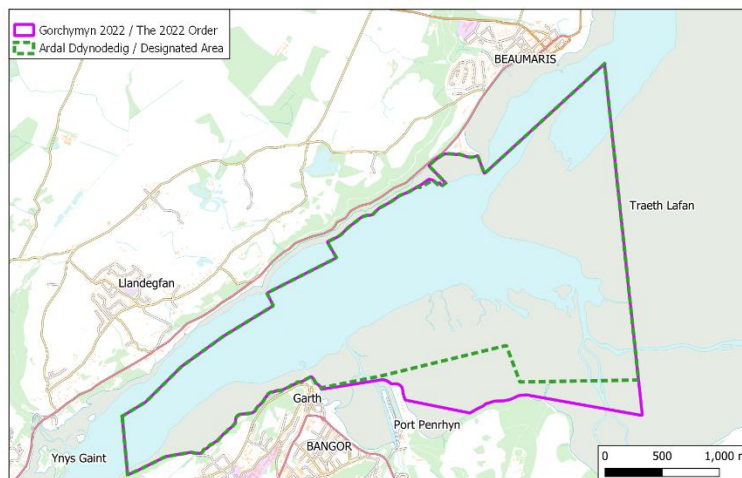
**Deddf Pysgodfeydd Môr 1967 (Pysgod Cregyn)  
(fel y'i diwygwyd)****Gorchymyn Pysgodfa Cregyn Gleision a Wystrys  
Afon Menai (Dwyrain) 2022 (2022 Rhif 213 (Cy. 69))****RHODDIR HYSBYSIAD DRWY HYN FOD:**

CYMDEITHAS RHEOLI GORCHYMYN PYSGODFA AFON MENAI (MSFOMA), PORTH PENRHYN, BANGOR GWYNEDD LL57 4HN ("MSFOMA"), sy'n gweithredu fel Derbynnnydd Grant Gorchymyn Pysgodfa Cregyn Gleision a Wystrys Afon Menai (Dwyrain) 2022 ("Gorchymyn 2022"), wedi dynodi'r ardal a ddisgrifir yn yr hysbysiad hwn fel yr ardal bysgodfa unigol yn unol ag adran 4 o Orchymyn 2022. Mae dynodi'r ardal hon wedi cael cydsyniad y Gweinidog Cymreig fel sy'n ofynnol o dan adran 5 o Orchymyn 2022 (gweler Atodiad A i'r hysbysiad hwn). Cyfeirir at yr ardal hon fel yr "Ardal Ddynodedig".

Mae'r hysbysiad wedi'i gyhoeddi yn unol ag adran 4(3) o'r Gorchymyn, sy'n ei gwneud yn ofynnol i'r dynodiad gael ei gyhoeddi ar wefan MSFOMA 7 niwrnod fan bellaf ar ôl iddo ddod yn weithredol.

Daw'r dynodiad hwn i rym ar 2 Ebrill 2022.

Dangosir hyd a lled yr Ardal Ddynodedig yn Ffigur 1, ac mae'r cyfesurynnau sy'n ei chyfyngu wedi'u rhestru dros y dudalen.



Gwneir y dynodiad hwn yn unol â phenderfyniad a wnaed gan MSFOMA yn ei gyfarfod ar 3ydd Rhagfyr 2021, ac fe'i llofnodwyd gan Gadeirydd y Gymdeithas.

ALAN WINSTONE  
Cadeirydd, MSFOMA  
8ydd Ebrill 2022

**CYMDEITHAS RHEOLI GORCHYMYN PYSGODFA  
AFON MENAI  
PORTH PENRHYN, BANGOR,  
GWYNEDD, LL57 4HN**

[www.msfoma.org](http://www.msfoma.org)  
[info@msfoma.org](mailto:info@msfoma.org)

**Sea Fisheries (Shellfish) Act 1967  
(as amended)****Menai Strait (East) Mussel and Oyster Fishery  
Order 2022 (2022 No. 213 (W. 69))****NOTICE IS HERE BY GIVEN THAT:**

The MENAI STRAIT FISHERY ORDER MANAGEMENT ASSOCIATION OF PORT PENRHYN, BANGOR, GWYNEDD, LL57 4HN ("MSFOMA") acting as the Grantee of the Menai Strait (East) Oyster and Mussel Fishery Order 2022 ("the 2022 Order") has designated the area described in this notice as the several fishery area pursuant to §4 of the 2022 Order. The designation of this area has received the consent of the Welsh Minister as required by §5 of the 2022 Order (see Annex A of this notice). This area shall be referred to as the "Designated Area".

This notice has been published pursuant to §4(3) of the Order, which requires that the designation must be published on the MSFOMA website no later than 7 days after it takes effect.

This designation comes into effect on the 2nd April 2022.

The extent of the Designated Area is illustrated in Figure 1 and the coordinates bounding it are listed overleaf.

This designation is in accordance with a resolution made by MSFOMA at its meeting on 3rd December 2021 and is signed by the Chair of the Association.

ALAN WINSTONE  
Chair, MSFOMA  
8th April 2022

**MENAI STRAIT FISHERY ORDER MANAGEMENT  
ASSOCIATION  
PORT PENRHYN, BANGOR,  
GWYNEDD, LL57 4HN**

[www.msfoma.org](http://www.msfoma.org)  
[info@msfoma.org](mailto:info@msfoma.org)

**Lesley Griffiths AS/MS**  
**Y Gweinidog Materion Gwledig a Gogledd Cymru, a'r Trefnydd**  
**Minister for Rural Affairs and North Wales, and Trefnydd**



**Llywodraeth Cymru**  
**Welsh Government**

Ein cyf/Our ref LG/00172/22

Alan Winstone  
Chair  
MSFOMA

info@msfoma.org

28<sup>th</sup> March 2022

Dear Alan,

Thank you for your letter of 24 March regarding the draft designation of several fishery area and requesting the Welsh Ministers' consent to it, pursuant to the Menai Strait (East) Mussel and Oyster Fishery Order 2022.

I am pleased to confirm my consent to the designation pursuant to article 5 of the 2022 Order.

I welcome the constructive working relationship which has been built between officials and MSFOMA, and which has supported the timely delivery of the new Order.

Yours sincerely,

**Lesley Griffiths AS/MS**  
**Y Gweinidog Materion Gwledig a Gogledd Cymru, a'r Trefnydd**  
**Minister for Rural Affairs and North Wales, and Trefnydd**

Bae Caerdydd • Cardiff Bay  
Caerdydd • Cardiff  
CF99 1SN

Canolfan Cyswllt Cyntaf / First Point of Contact Centre:  
0300 0604400  
[Gohebiaeth.Lesley.Griffiths@llyw.cymru](mailto:Gohebiaeth.Lesley.Griffiths@llyw.cymru)  
[Correspondence.Lesley.Griffiths@gov.wales](mailto:Correspondence.Lesley.Griffiths@gov.wales)

Rydym yn croesawu derbyn gohebiaeth yn Gymraeg. Byddwn yn ateb gohebiaeth a dderbynnir yn Gymraeg yn Gymraeg ac ni fydd gohebu yn Gymraeg yn arwain at oedi.

We welcome receiving correspondence in Welsh. Any correspondence received in Welsh will be answered in Welsh and corresponding in Welsh will not lead to a delay in responding.

## Atodiad B: Cyfesurynnau'r Ardal Ddynodedig

Mae'r Ardal Ddynodedig wedi'i chyfyngu gan y cyfesurynnau a restrir isod (wedi'u cyfeirio at ddatwm WGS84).

| Pwynt / Point | Hydred / Longitude | Latitude / Lledred |
|---------------|--------------------|--------------------|
| 1             | 004° 8.8202' W     | 053° 14.0223' N    |
| 2             | 004° 8.6395' W     | 053° 14.0900' N    |
| 3             | 004° 8.3600' W     | 053° 14.2610' N    |
| 4             | 004° 8.0340' W     | 053° 14.4070' N    |
| 5             | 004° 7.6461' W     | 053° 14.5540' N    |
| 6             | 004° 7.6978' W     | 053° 14.6130' N    |
| 7             | 004° 7.1553' W     | 053° 14.7845' N    |
| 8             | 004° 7.2302' W     | 053° 14.8594' N    |
| 9             | 004° 7.2261' W     | 053° 14.8603' N    |
| 10            | 004° 7.2121' W     | 053° 14.8640' N    |
| 11            | 004° 7.1872' W     | 053° 14.8716' N    |
| 12            | 004° 7.1756' W     | 053° 14.8749' N    |
| 13            | 004° 7.1655' W     | 053° 14.8780' N    |
| 14            | 004° 7.1523' W     | 053° 14.8821' N    |
| 15            | 004° 7.1382' W     | 053° 14.8874' N    |
| 16            | 004° 7.1248' W     | 053° 14.8932' N    |
| 17            | 004° 7.1179' W     | 053° 14.8967' N    |
| 18            | 004° 7.1089' W     | 053° 14.9020' N    |
| 19            | 004° 7.0999' W     | 053° 14.9083' N    |
| 20            | 004° 7.0901' W     | 053° 14.9143' N    |
| 21            | 004° 7.0840' W     | 053° 14.9177' N    |
| 22            | 004° 7.0694' W     | 053° 14.9264' N    |
| 23            | 004° 7.0553' W     | 053° 14.9342' N    |
| 24            | 004° 7.0416' W     | 053° 14.9404' N    |
| 25            | 004° 7.0293' W     | 053° 14.9461' N    |
| 26            | 004° 7.0232' W     | 053° 14.9491' N    |
| 27            | 004° 7.0112' W     | 053° 14.9547' N    |
| 28            | 004° 6.9963' W     | 053° 14.9618' N    |
| 29            | 004° 6.9814' W     | 053° 14.9697' N    |
| 30            | 004° 6.9689' W     | 053° 14.9750' N    |
| 31            | 004° 6.9594' W     | 053° 14.9785' N    |
| 32            | 004° 6.9520' W     | 053° 14.9808' N    |
| 33            | 004° 6.9410' W     | 053° 14.9834' N    |
| 34            | 004° 6.9244' W     | 053° 14.9859' N    |
| 35            | 004° 6.9126' W     | 053° 14.9867' N    |
| 36            | 004° 6.8986' W     | 053° 14.9873' N    |
| 37            | 004° 6.8886' W     | 053° 14.9885' N    |
| 38            | 004° 6.8784' W     | 053° 14.9909' N    |
| 39            | 004° 6.8714' W     | 053° 14.9937' N    |
| 40            | 004° 6.8618' W     | 053° 14.9994' N    |
| 41            | 004° 6.8507' W     | 053° 15.0070' N    |
| 42            | 004° 6.8412' W     | 053° 15.0130' N    |
| 43            | 004° 6.8306' W     | 053° 15.0189' N    |
| 44            | 004° 6.8211' W     | 053° 15.0231' N    |
| 45            | 004° 6.8154' W     | 053° 15.0252' N    |
| 46            | 004° 6.7993' W     | 053° 15.0304' N    |
| 47            | 004° 6.7877' W     | 053° 15.0344' N    |

## Annex B: Coordinates of Designated Area

The Designated Area is bounded by the coordinates listed below (referenced to the WGS84 datum).

| Pwynt / Point | Hydred / Longitude | Latitude / Lledred |
|---------------|--------------------|--------------------|
| 48            | 004° 6.7746' W     | 053° 15.0386' N    |
| 49            | 004° 6.7634' W     | 053° 15.0422' N    |
| 50            | 004° 6.7521' W     | 053° 15.0462' N    |
| 51            | 004° 6.7405' W     | 053° 15.0506' N    |
| 52            | 004° 6.7352' W     | 053° 15.0526' N    |
| 53            | 004° 6.7205' W     | 053° 15.0581' N    |
| 54            | 004° 6.7041' W     | 053° 15.0653' N    |
| 55            | 004° 6.6875' W     | 053° 15.0727' N    |
| 56            | 004° 6.6742' W     | 053° 15.0789' N    |
| 57            | 004° 6.6666' W     | 053° 15.0818' N    |
| 58            | 004° 6.6595' W     | 053° 15.0839' N    |
| 59            | 004° 6.6425' W     | 053° 15.0885' N    |
| 60            | 004° 6.6325' W     | 053° 15.0910' N    |
| 61            | 004° 6.6237' W     | 053° 15.0930' N    |
| 62            | 004° 6.6135' W     | 053° 15.0951' N    |
| 63            | 004° 6.5925' W     | 053° 15.1011' N    |
| 64            | 004° 6.5696' W     | 053° 15.1095' N    |
| 65            | 004° 6.5588' W     | 053° 15.1136' N    |
| 66            | 004° 6.5455' W     | 053° 15.1181' N    |
| 67            | 004° 6.5364' W     | 053° 15.1212' N    |
| 68            | 004° 6.5247' W     | 053° 15.1251' N    |
| 69            | 004° 6.5201' W     | 053° 15.1270' N    |
| 70            | 004° 6.5133' W     | 053° 15.1206' N    |
| 71            | 004° 6.4059' W     | 053° 15.1565' N    |
| 72            | 004° 6.3465' W     | 053° 15.1261' N    |
| 73            | 004° 6.3056' W     | 053° 15.1447' N    |
| 74            | 004° 6.4403' W     | 053° 15.2247' N    |
| 75            | 004° 6.4311' W     | 053° 15.2309' N    |
| 76            | 004° 6.4204' W     | 053° 15.2372' N    |
| 77            | 004° 6.4078' W     | 053° 15.2440' N    |
| 78            | 004° 6.3985' W     | 053° 15.2491' N    |
| 79            | 004° 6.3847' W     | 053° 15.2560' N    |
| 80            | 004° 6.3704' W     | 053° 15.2621' N    |
| 81            | 004° 6.3605' W     | 053° 15.2658' N    |
| 82            | 004° 6.3510' W     | 053° 15.2699' N    |
| 83            | 004° 6.3447' W     | 053° 15.2730' N    |
| 84            | 004° 6.3298' W     | 053° 15.2789' N    |
| 85            | 004° 6.3165' W     | 053° 15.2815' N    |
| 86            | 004° 6.3037' W     | 053° 15.2824' N    |
| 87            | 004° 6.2870' W     | 053° 15.2828' N    |
| 88            | 004° 6.2761' W     | 053° 15.2827' N    |
| 89            | 004° 6.2523' W     | 053° 15.2820' N    |
| 90            | 004° 6.2352' W     | 053° 15.2805' N    |
| 91            | 004° 6.2223' W     | 053° 15.2799' N    |
| 92            | 004° 6.2152' W     | 053° 15.2809' N    |
| 93            | 004° 6.2056' W     | 053° 15.2814' N    |
| 94            | 004° 6.1940' W     | 053° 15.2800' N    |

| Pwynt / Point | Hydred / Longitude | Latitude / Lledred |
|---------------|--------------------|--------------------|
| 95            | 004° 6.1811' W     | 053° 15.2777' N    |
| 96            | 004° 6.1657' W     | 053° 15.2750' N    |
| 97            | 004° 6.1380' W     | 053° 15.2701' N    |
| 98            | 004° 6.1272' W     | 053° 15.2687' N    |
| 99            | 004° 6.1174' W     | 053° 15.2680' N    |
| 100           | 004° 6.1053' W     | 053° 15.2681' N    |
| 101           | 004° 6.0886' W     | 053° 15.2696' N    |
| 102           | 004° 6.0781' W     | 053° 15.2713' N    |
| 103           | 004° 6.0662' W     | 053° 15.2741' N    |
| 104           | 004° 6.0579' W     | 053° 15.2767' N    |
| 105           | 004° 6.0028' W     | 053° 15.1918' N    |
| 106           | 004° 5.0680' W     | 053° 15.7195' N    |
| 107           | 004° 5.0035' W     | 053° 15.4046' N    |
| 108           | 004° 4.7993' W     | 053° 14.4070' N    |
| 109           | 004° 4.7662' W     | 053° 14.2307' N    |
| 110           | 004° 5.6980' W     | 053° 14.2128' N    |
| 111           | 004° 5.8095' W     | 053° 14.3838' N    |
| 112           | 004° 6.7970' W     | 053° 14.2302' N    |
| 113           | 004° 7.2619' W     | 053° 14.1707' N    |
| 114           | 004° 7.2688' W     | 053° 14.1771' N    |
| 115           | 004° 7.2791' W     | 053° 14.1835' N    |
| 116           | 004° 7.2960' W     | 053° 14.1902' N    |
| 117           | 004° 7.3039' W     | 053° 14.1941' N    |
| 118           | 004° 7.3066' W     | 053° 14.1963' N    |
| 119           | 004° 7.3119' W     | 053° 14.2024' N    |
| 120           | 004° 7.3195' W     | 053° 14.2101' N    |
| 121           | 004° 7.3245' W     | 053° 14.2148' N    |
| 122           | 004° 7.3322' W     | 053° 14.2200' N    |
| 123           | 004° 7.3419' W     | 053° 14.2235' N    |
| 124           | 004° 7.3450' W     | 053° 14.2214' N    |
| 125           | 004° 7.3582' W     | 053° 14.2174' N    |
| 126           | 004° 7.4096' W     | 053° 14.1993' N    |
| 127           | 004° 7.4183' W     | 053° 14.1983' N    |
| 128           | 004° 7.4282' W     | 053° 14.1958' N    |
| 129           | 004° 7.4493' W     | 053° 14.1968' N    |
| 130           | 004° 7.4524' W     | 053° 14.1933' N    |
| 131           | 004° 7.4612' W     | 053° 14.1901' N    |
| 132           | 004° 7.4642' W     | 053° 14.1879' N    |
| 133           | 004° 7.4785' W     | 053° 14.1841' N    |
| 134           | 004° 7.4877' W     | 053° 14.1812' N    |
| 135           | 004° 7.4965' W     | 053° 14.1801' N    |
| 136           | 004° 7.5053' W     | 053° 14.1764' N    |
| 137           | 004° 7.5117' W     | 053° 14.1725' N    |
| 138           | 004° 7.5220' W     | 053° 14.1699' N    |
| 139           | 004° 7.5638' W     | 053° 14.1582' N    |
| 140           | 004° 7.5728' W     | 053° 14.1558' N    |
| 141           | 004° 7.5886' W     | 053° 14.1538' N    |
| 142           | 004° 7.6039' W     | 053° 14.1546' N    |
| 143           | 004° 7.6302' W     | 053° 14.1501' N    |
| 144           | 004° 7.6434' W     | 053° 14.1480' N    |
| 145           | 004° 7.6528' W     | 053° 14.1468' N    |
| 146           | 004° 7.6660' W     | 053° 14.1431' N    |

| Pwynt / Point | Hydred / Longitude | Latitude / Lledred |
|---------------|--------------------|--------------------|
| 147           | 004° 7.6747' W     | 053° 14.1387' N    |
| 148           | 004° 7.6794' W     | 053° 14.1351' N    |
| 149           | 004° 7.6921' W     | 053° 14.1234' N    |
| 150           | 004° 7.6998' W     | 053° 14.1185' N    |
| 151           | 004° 7.7089' W     | 053° 14.1081' N    |
| 152           | 004° 7.7184' W     | 053° 14.0998' N    |
| 153           | 004° 7.7272' W     | 053° 14.0938' N    |
| 154           | 004° 7.7407' W     | 053° 14.0860' N    |
| 155           | 004° 7.7545' W     | 053° 14.0783' N    |
| 156           | 004° 7.7589' W     | 053° 14.0761' N    |
| 157           | 004° 7.7665' W     | 053° 14.0688' N    |
| 158           | 004° 7.7739' W     | 053° 14.0606' N    |
| 159           | 004° 7.7828' W     | 053° 14.0540' N    |
| 160           | 004° 7.7969' W     | 053° 14.0487' N    |
| 161           | 004° 7.8105' W     | 053° 14.0460' N    |
| 162           | 004° 7.8239' W     | 053° 14.0448' N    |
| 163           | 004° 7.8372' W     | 053° 14.0438' N    |
| 164           | 004° 7.8527' W     | 053° 14.0429' N    |
| 165           | 004° 7.8714' W     | 053° 14.0420' N    |
| 166           | 004° 7.8886' W     | 053° 14.0406' N    |
| 167           | 004° 7.9026' W     | 053° 14.0375' N    |
| 168           | 004° 7.9116' W     | 053° 14.0338' N    |
| 169           | 004° 7.9178' W     | 053° 14.0305' N    |
| 170           | 004° 7.9237' W     | 053° 14.0252' N    |
| 171           | 004° 7.9275' W     | 053° 14.0188' N    |
| 172           | 004° 7.9284' W     | 053° 14.0135' N    |
| 173           | 004° 7.9290' W     | 053° 14.0043' N    |
| 174           | 004° 7.9325' W     | 053° 13.9960' N    |
| 175           | 004° 7.9411' W     | 053° 13.9911' N    |
| 176           | 004° 7.9544' W     | 053° 13.9818' N    |
| 177           | 004° 7.9624' W     | 053° 13.9773' N    |
| 178           | 004° 7.9709' W     | 053° 13.9732' N    |
| 179           | 004° 7.9787' W     | 053° 13.9701' N    |
| 180           | 004° 7.9867' W     | 053° 13.9659' N    |
| 181           | 004° 7.9958' W     | 053° 13.9590' N    |
| 182           | 004° 8.0016' W     | 053° 13.9552' N    |
| 183           | 004° 8.0098' W     | 053° 13.9512' N    |
| 184           | 004° 8.0231' W     | 053° 13.9464' N    |
| 185           | 004° 8.0290' W     | 053° 13.9412' N    |
| 186           | 004° 8.0411' W     | 053° 13.9326' N    |
| 187           | 004° 8.0559' W     | 053° 13.9227' N    |
| 188           | 004° 8.0619' W     | 053° 13.9185' N    |
| 189           | 004° 8.0708' W     | 053° 13.9132' N    |
| 190           | 004° 8.0794' W     | 053° 13.9107' N    |
| 191           | 004° 8.0870' W     | 053° 13.9079' N    |
| 192           | 004° 8.0927' W     | 053° 13.9047' N    |
| 193           | 004° 8.1003' W     | 053° 13.9021' N    |
| 194           | 004° 8.1110' W     | 053° 13.8972' N    |
| 195           | 004° 8.1232' W     | 053° 13.8946' N    |
| 196           | 004° 8.1298' W     | 053° 13.8911' N    |
| 197           | 004° 8.1377' W     | 053° 13.8851' N    |
| 198           | 004° 8.1451' W     | 053° 13.8801' N    |

| Pwynt / Point | Hydred / Longitude | Latitude / Lledred |
|---------------|--------------------|--------------------|
| 199           | 004° 8.1533' W     | 053° 13.8765' N    |
| 200           | 004° 8.1609' W     | 053° 13.8744' N    |
| 201           | 004° 8.1715' W     | 053° 13.8719' N    |
| 202           | 004° 8.1788' W     | 053° 13.8681' N    |
| 203           | 004° 8.1822' W     | 053° 13.8619' N    |
| 204           | 004° 8.1876' W     | 053° 13.8577' N    |
| 205           | 004° 8.1937' W     | 053° 13.8550' N    |
| 206           | 004° 8.2029' W     | 053° 13.8534' N    |
| 207           | 004° 8.2299' W     | 053° 13.8533' N    |
| 208           | 004° 8.2447' W     | 053° 13.8542' N    |
| 209           | 004° 8.2561' W     | 053° 13.8553' N    |
| 210           | 004° 8.2677' W     | 053° 13.8567' N    |
| 211           | 004° 8.2851' W     | 053° 13.8566' N    |
| 212           | 004° 8.2952' W     | 053° 13.8556' N    |
| 213           | 004° 8.3074' W     | 053° 13.8536' N    |
| 214           | 004° 8.3174' W     | 053° 13.8524' N    |
| 215           | 004° 8.3424' W     | 053° 13.8502' N    |
| 216           | 004° 8.3597' W     | 053° 13.8487' N    |
| 217           | 004° 8.3686' W     | 053° 13.8478' N    |
| 218           | 004° 8.3893' W     | 053° 13.8449' N    |
| 219           | 004° 8.4027' W     | 053° 13.8433' N    |
| 220           | 004° 8.4319' W     | 053° 13.8402' N    |
| 221           | 004° 8.4557' W     | 053° 13.8374' N    |
| 222           | 004° 8.4751' W     | 053° 13.8342' N    |
| 223           | 004° 8.4891' W     | 053° 13.8309' N    |
| 224           | 004° 8.5048' W     | 053° 13.8262' N    |
| 225           | 004° 8.5282' W     | 053° 13.8187' N    |
| 226           | 004° 8.5509' W     | 053° 13.8113' N    |
| 227           | 004° 8.5660' W     | 053° 13.8067' N    |
| 228           | 004° 8.5973' W     | 053° 13.7972' N    |
| 229           | 004° 8.6133' W     | 053° 13.7923' N    |
| 230           | 004° 8.6248' W     | 053° 13.7889' N    |
| 231           | 004° 8.6840' W     | 053° 13.7702' N    |
| 232           | 004° 8.6931' W     | 053° 13.7675' N    |
| 233           | 004° 8.7067' W     | 053° 13.7645' N    |
| 234           | 004° 8.7300' W     | 053° 13.7575' N    |
| 235           | 004° 8.7507' W     | 053° 13.7514' N    |
| 236           | 004° 8.7611' W     | 053° 13.7484' N    |
| 237           | 004° 8.7704' W     | 053° 13.7460' N    |